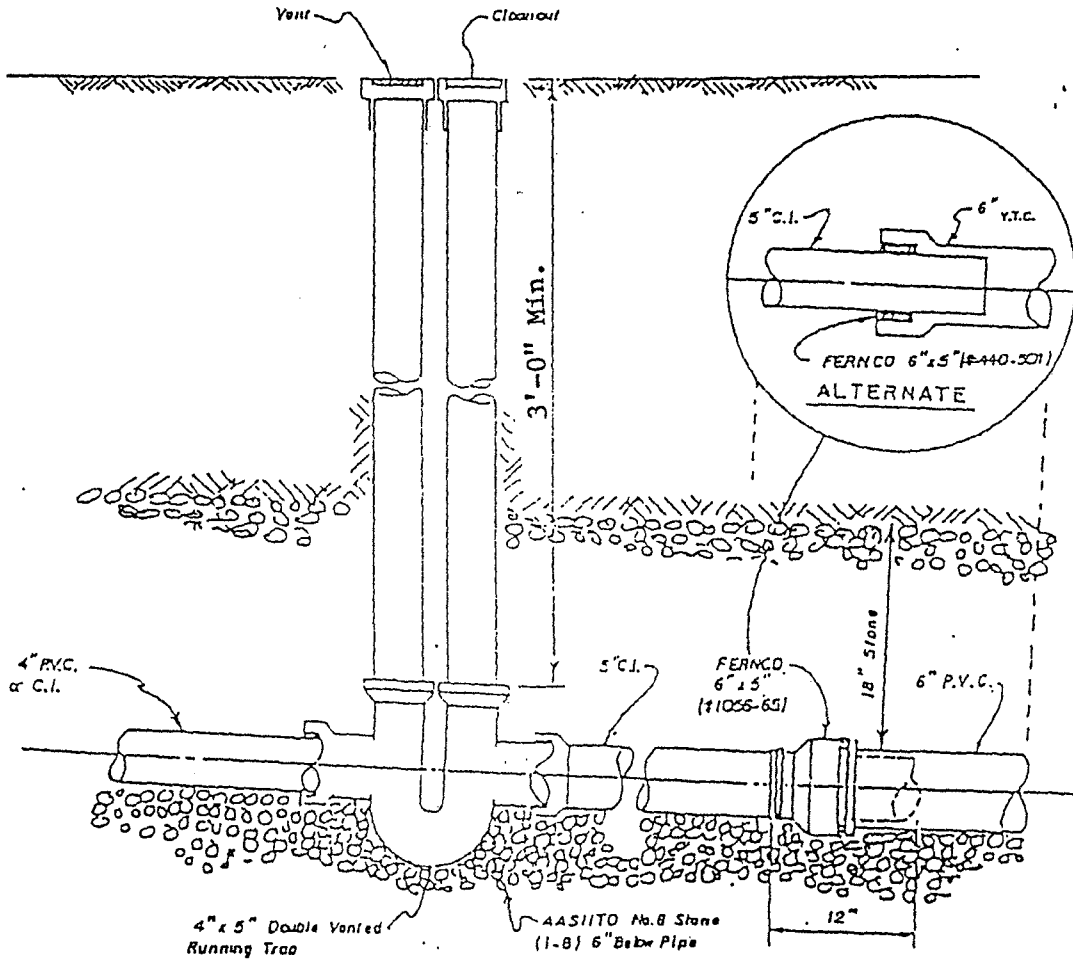


TYPICAL SERVICE LATERAL WITH TRAP

- NOTE: 1. ALL JOINTS IN ACCORDANCE WITH LOCAL PLUMBING CODE.
2. WHERE SEWAGE FROM A BUILDING DISCHARGES DIRECTLY INTO A LOW PRESSURE PUMP LIFT STATION, THE RUNNING TRAP SIZE SHALL BE 4" X 4" CI.

SANITARY SEWER LATERAL CLEANOUT AND VENT

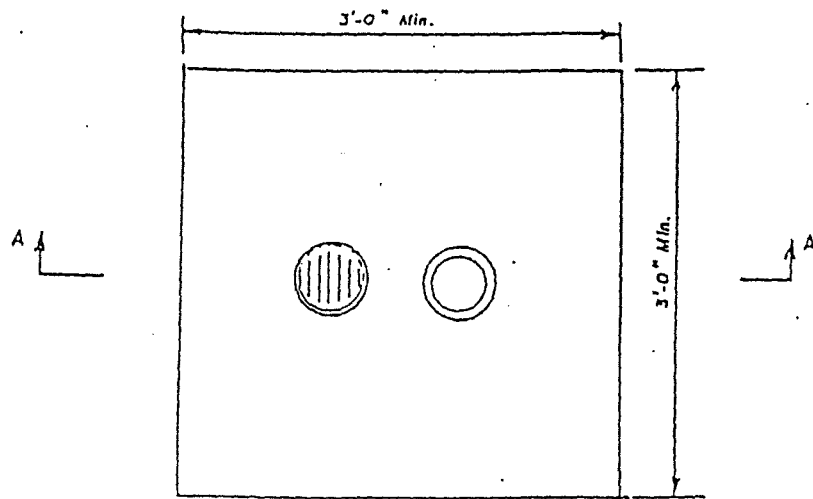


* MIN. LATERAL GRADE $\frac{1}{4}$ " PER FT.

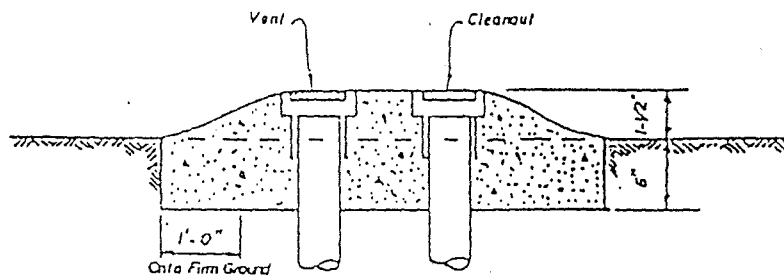
COUPLING BANDS SHALL BE # 316 STAINLESS STEEL

Exhibit "A"

SANITARY SEWER LATERAL CLEANOUT AND VENT



PLAN
SCALE: 1"=1'-0"



SECTION A-A
SCALE: 1"=1'-0"

NOTES

1. PROVIDE CONCRETE PAD IF CLEANOUT/VENT ARE LOCATED IN PAVED AREA.
2. CLEANOUT/VENT SHALL BE INSTALLED FLUSH WITH FINAL GRADE IN LAWN/LANDSCAPE AREAS.
3. CLEANOUT/VENT SHALL NOT BE LOCATED IN DRAINAGE SWALES.
4. CONCRETE PAD ALSO REQUIRED FOR CLEANOUTS INSTALLED IN PAVED AREAS WITHOUT VENTS.

Exhibit "A"