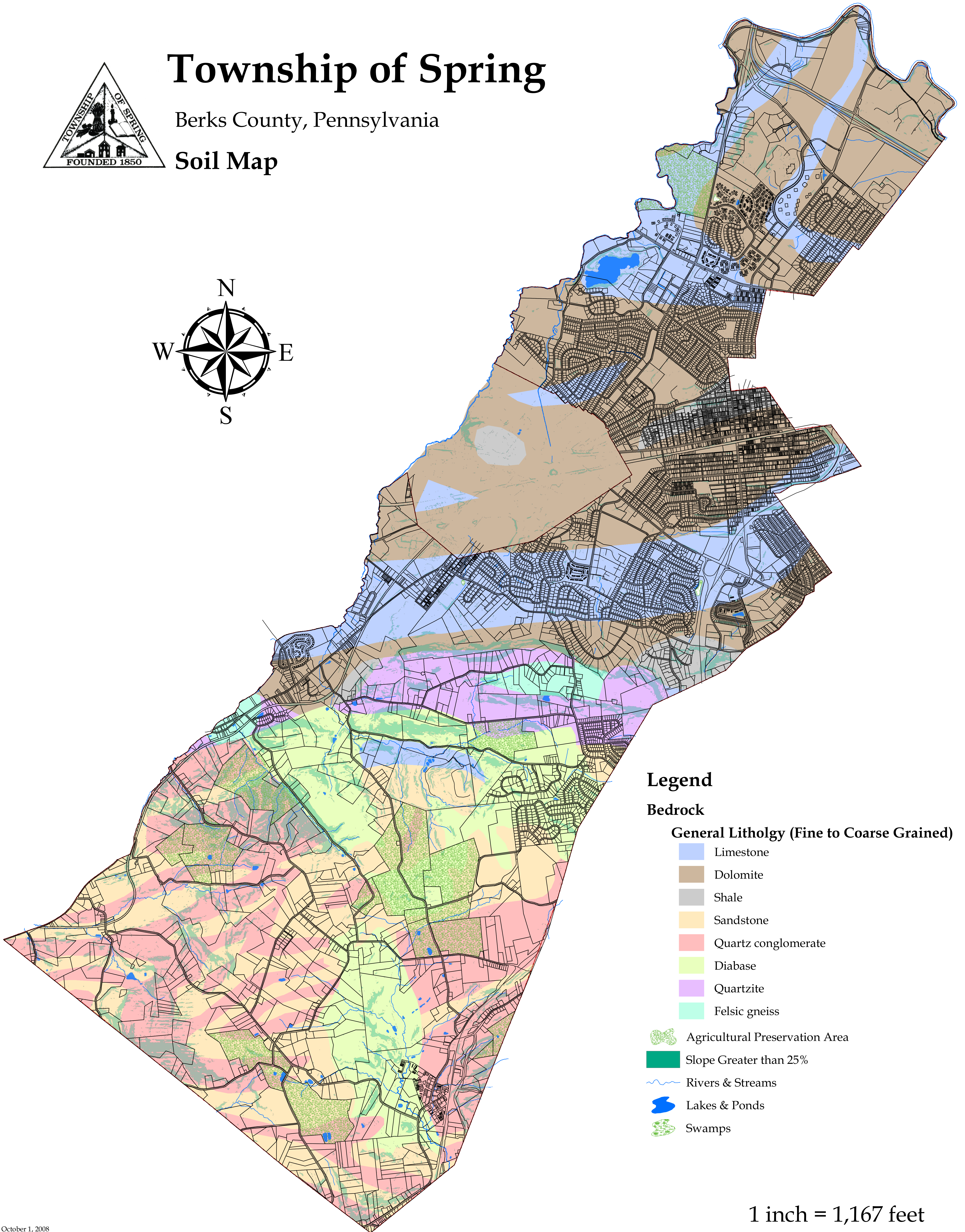
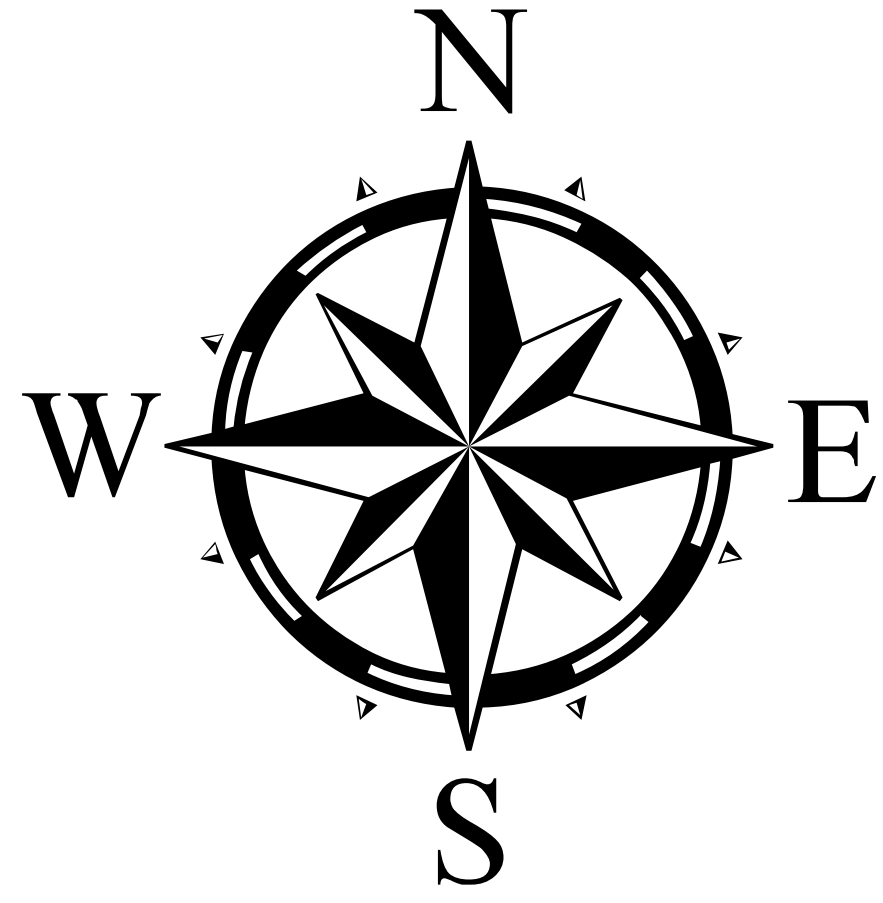




Township of Spring

Berks County, Pennsylvania

Soil Map



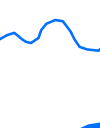




Legend

Bedrock

General Lithology (Fine to Coarse Grained)

-  Limestone
-  Dolomite
-  Shale
-  Sandstone
-  Quartz conglomerate
-  Diabase
-  Quartzite
-  Felsic gneiss

-  Agricultural Preservation Area
-  Slope Greater than 25%
-  Rivers & Streams
-  Lakes & Ponds
-  Swamps

1 inch = 1,167 feet